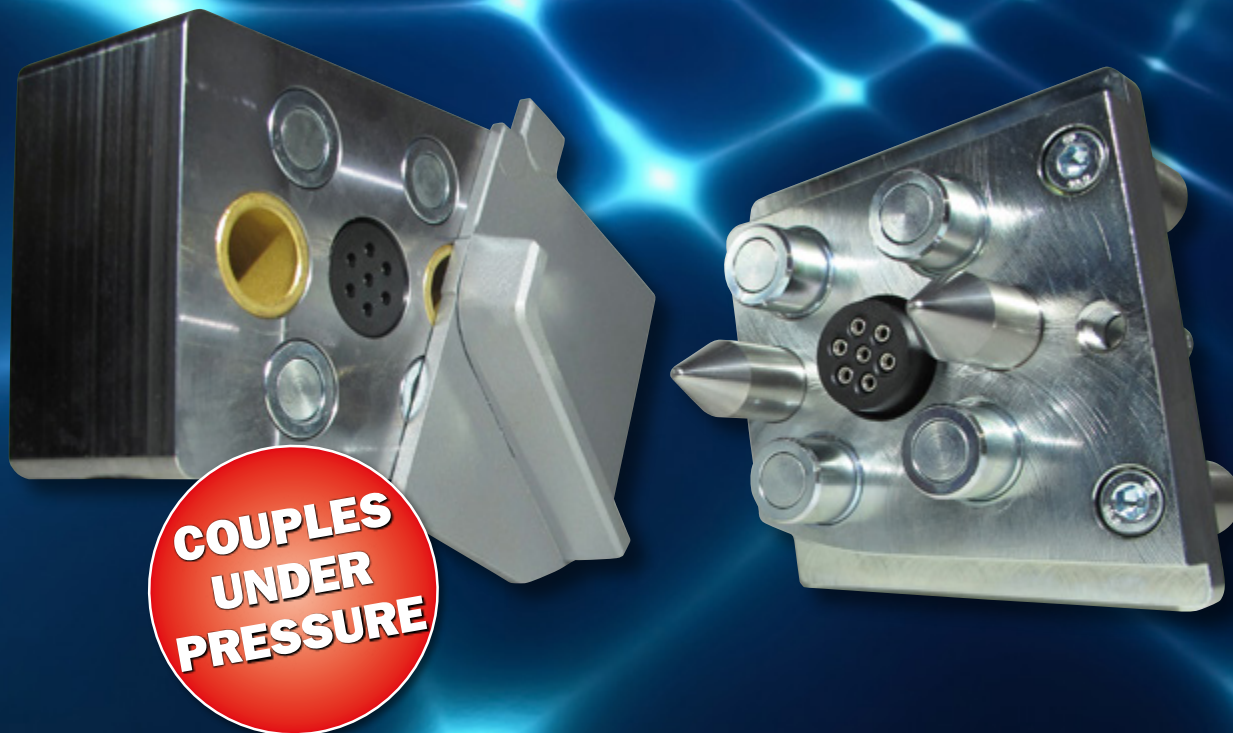


HIGHSPEED OIL COUPLER



**COUPLES
UNDER
PRESSURE**

2 hydraulic d/a services
couples up to 7 electrical lines • with a clearance of 20 mm

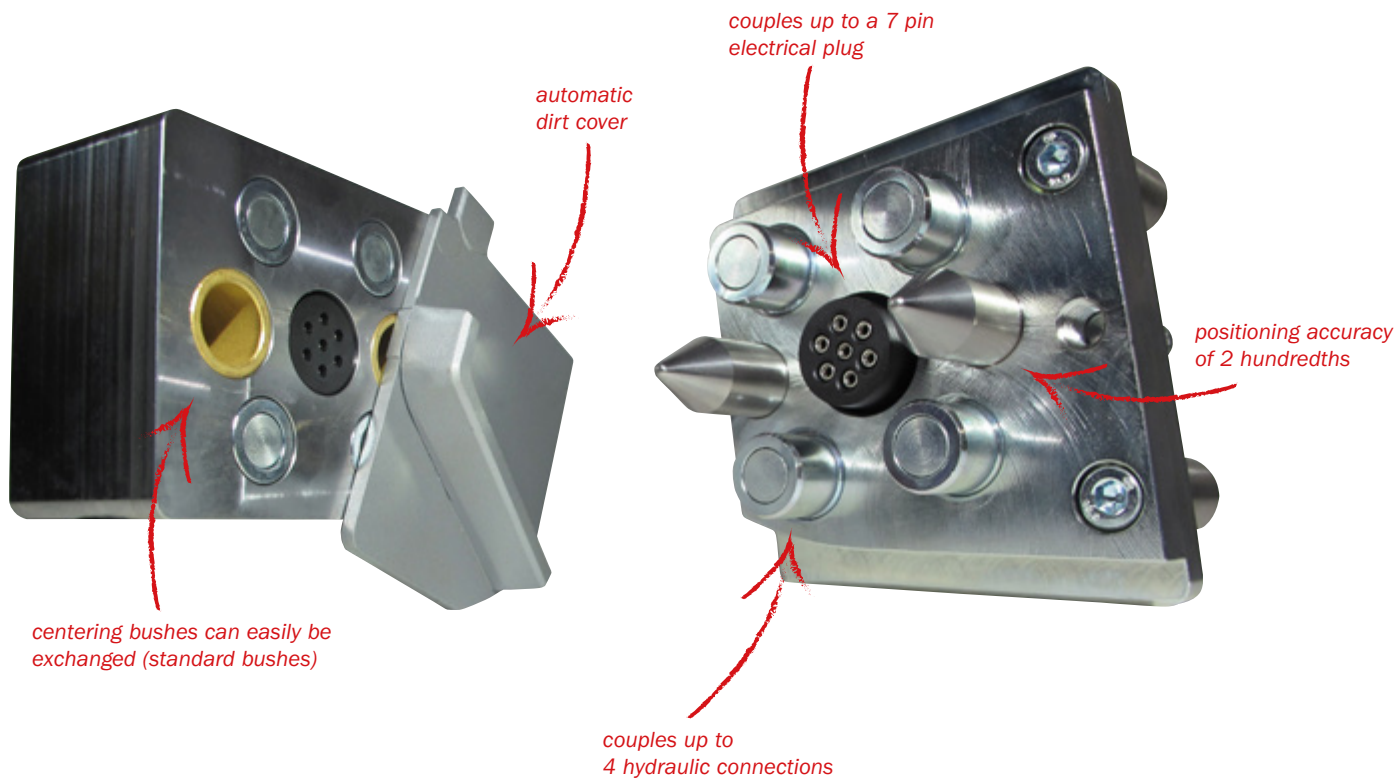


patented
with CE marking

HIGHSPEED OIL COUPLER

successfully used for years

CREATES AN EFFECTIVE WORKFLOW



- compatibility with other attachments without a system is retained (the carriage standard is not changed)
- plugs together up to 4 hydraulic connections and a 7 pin electrical plug
- automatic dirt cover on the vehicle
- couples under pressure (e.g.: strong sunlight)
- couplings are opened 100%

- full clearance tolerance when coupled
- no mechanical influence on the connecting elements
- positioning accuracy of 2 hundredths
- centering bushes can easily be exchanged (standard bushes)
- the coupling unit runs in parallel with the help of the sliding tray





COMFORT

- the hydraulic attachments can easily be changed from the loader cab in a matter of seconds (saving working time) in all weather
- no more climbing up and down
- no longer necessary!: manual connection / disconnection of the lines
- no additional operation necessary, is operated with the device lock
- interchanging / tearing off the lines is not possible
- no cables hanging down on the attachment
- the driver's cab is less soiled
- no more oily hands or pants
- easy handling
- low maintenance

EFFECTIVENESS

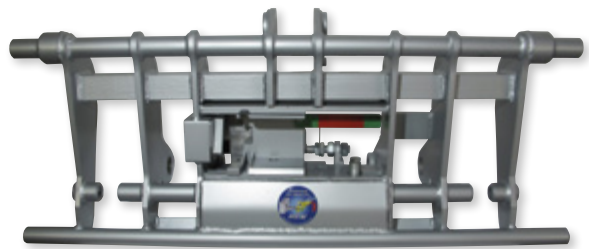
- always the optimal attachment for your application
- saves time and money
- more flexible use of the vehicle thanks to a quick change of the attachment
- no constant loss of oil, no refill necessary
- no unnecessary operating hours on the carriage vehicle
- no oil contaminated feed

SECURITY

- more safety for the operator
- body-friendly, jumping up and down not necessary
- no risk of falling
- the system is also mechanically secured
- unintentional opening of the device lock not possible thanks to two-handed operation
- visual (un)locking indication



coupling unit on the attachment +



carriage with Highspeed Oil Coupler =



comfortable, effective and safe working

ASSEMBLY

FRONT LOADER



1. hook in the assembly kit, measure from the side, weld



2. install the hydraulics – done

STANDARD CARRIAGE



1. exchange carriage on vehicle



2. install the hydraulics – done

ATTACHMENT



1. fix the assembly jig, weld the floating plate's bracket and the spring anchor



2. engage the floating plate, install the hydraulics



3. couple – done



MSW GMBH

Wimm 9 • 5201 Seekirchen • Austria

T.: +43 (0)676 / 68 29 060 • info@moesl-schnellwechsler.com

www.moesl-schnellwechsler.com